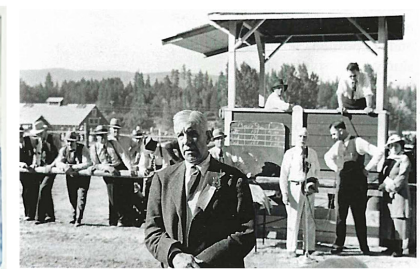


Self Guided Walking Tour



1. Hayfields Orchard Site
2. Barn Complex a,b,c,d
3. Path to the Falls & Pelton Wheel Water Intake
4. Site of the Chalet
5. Group Campsite & Playground
6. Site of the Dog Kennel
7. Storage Shed
8. Manor House
9. Weeping Beech Tree
10. Labyrinth
11. Copper Beech Tree
12. Alice's Grave
13. Sundial
14. Indigenous Plaque
15. To the Packing House & Boat Launch



Artwork by Local Artist Grace Wulff

1 Hayfields Orchard Site

This flat, open area was used partly as a pasture where the dairy cows could graze and partly as an orchard. A variety of fruit was grown here, including crab apples which were used to make sauces and preserves.

2 Barn Complex

The buildings in this area comprise the core of Capt

James Dun-Waters' agricultural operations at Fintry. Of prime importance is the octagonal dairy barn, which is the last structure of its kind in the province. Built in 1924, it housed Fintry's Ayrshire dairy cows in bovine luxury and comfort. The carefully engineered sanitary system removed all waste from the building and deposited it in the slurry pit south of the barn. From there, the effluent was integrated with the irrigation system and recycled into the orchard.

7655 Fintry Delta Road Kelowna, BC V1Z 3V2

- a. Horse Barn
- b. Dairy Barn
- c. Hayshed Granary
- d. Pig Barn

3 Path to Falls & Pelton Wheel Water Intake

This path leads to the stairway that gives access to the waterfalls and intake point for the water required to operate the spray irrigation and Pelton-wheel generators. The Estate was ahead of its time in that all buildings were supplied with electricity and were linked by an internal telephone system.

4 Site of the "Chalet"

"The Chalet" was a log cabin set in the hillside overlooking the Estate and home for some of the workers. The Chalet was unfortunately lost to fire.

5 Group Campsite and Playground

The group campsite is at the base of the cliff where most of the stone was quarried to build the Manor House, including massive slabs of granite used to build the grotto for the Kodiak Bear in the Trophy Room.

6 Site of the Dog Kennel

Dogs were an integral part of life at Fintry, as in many British households. Several lived here at any one time and Airedales were a favourite. In keeping with this tradition, visitors are welcome to bring their dogs, on leads, while touring the Manor House.

7 Storage Shed

It is believed these three rooms would have been used as storage space as there was no bathroom facilities available.

8 Manor House

The Manor House, known then as "Fintry Proper", was the residence of James Cameron Dun-Waters, his first wife Alice and his second wife Margaret. Constructed in 1910-1911, the house was gutted by fire in 1924, leaving the stone walls standing. This enabled a rapid rebuild. The Trophy Room, an addition underway at the time of the fire, was also completed in 1924.

9 Weeping Beech Tree

The Weeping Beech Tree was planted during the time the Dun-Waters lived here and may have been brought from England as a small tree. A reminder that four acres of ornamental gardens once surrounded the Manor House.

10 Labyrinth

Take time to walk the Labyrinth, created by the late Cathryne Durante, a local resident. She referenced the famous original at Chartres Cathedral in France as the model. Unlike a maze, a labyrinth has no dead ends. The continuous path encourages the visitor to slow the pace and savor the atmosphere of the park.

11 Copper Beech Tree

The Copper Beech Tree was planted during the time the Dun-Waters lived here and may have been brought from England as a small tree. A reminder that four acres of ornamental gardens once surrounded the Manor House.

12 Alice's Grave

Alice, the first Mrs. Dun-Waters, died in 1924 and is buried here. Over the years, the gravestone suffered the effects of weathering. Lying flat, the water froze and thawed each year crumbling the concrete marker. The Friends of Fintry decided to remove the original and replace it with a copy. It is exact in all the details except the material – Quebec granite, which is more durable.

13 Sundial

The Sundial was gifted to James Dun-Waters from the South Shropshire Hounds when he left England and immigrated to Canada. It was a considerable gift, as the entire pedestal and brass dial were shipped across the Atlantic and Canada. The artisan used English limestone, a common material for garden ornaments, sculptures and ornamental details on buildings. The original dial is part of the Manor House Collection. Note the stone pathway that leads to the front steps of the house. It's made of carefully selected naturally flat stone probably collected from the bed of Short's Creek.

Photos Courtesy of Greater Vernon Museum and Archives & Armstrong Spallmuheen Museum & Art Gallery
Pamphlet Design by Jaimie Dewar
Version 11/2024

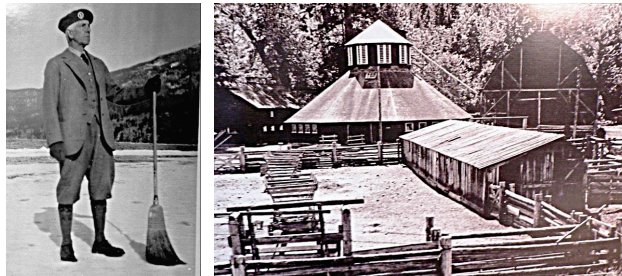


14 Indigenous Plaque

The Friends of Fintry acknowledge that both Fintry Estate and Fintry Provincial Park are situated on the unceded ancestral territory of the Syilx Okanagan Nation. The Shorts Creek delta is culturally important to the Syilx People providing a summer fishing camp on a trade route known in the 1800s as nkwala's Trail. smymay, oral history tells of a battle on the delta between the Syilx and Shuswap that ended when Gremel Chief nkwala mediated a truce. The historical relevance plays a key role in maintaining healthy ecosystems for future generations. This surrounding area provides critical habitat for numerous species now considered endangered or sensitive. Please use consideration as you enjoy your time here.

15 To the Packing House & Boat launch

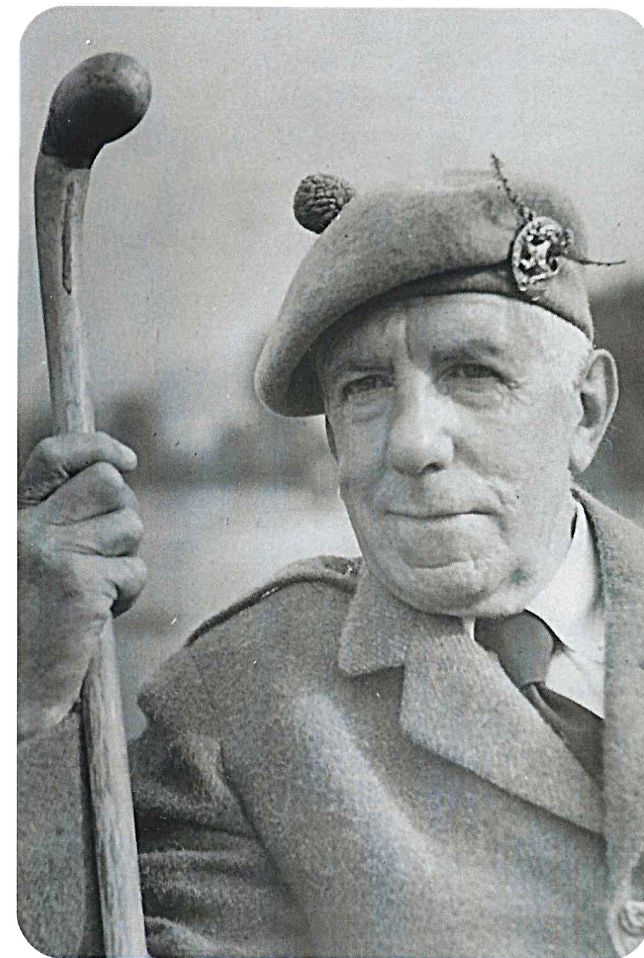
The Packing House at Fintry is the only surviving one at which the sternwheelers on the lake would dock to load the products of the Fintry Estate. The lake was, essentially, the valley's highway, and the CP Rail sternwheelers were the trucks of the day. In addition to moving freight, the "S.S.Sicamous" provided passengers with private cabins, a post office and a luxurious dining room that used dairy products from Fintry. Most importantly the sternwheelers connected all the lakeside settlements with the railroad at Okanagan Landing. Have a look at sssicamous.ca.



The Friends of Fintry Provincial Park Society is a non-profit association that is in partnership with BC Parks to preserve the Manor House, barns and associated historic features of the park and to use these features to enhance our visitor's experience. We share the park with the natural world, including thousands of bats. Thank you!



SELF GUIDED WALKING TOUR



FINTRY.CA